

Unit 1: Organization of the Body

1-1 Notes

Anatomy –

Physiology –

_____ determines _____

Levels of Organization:

Cells –

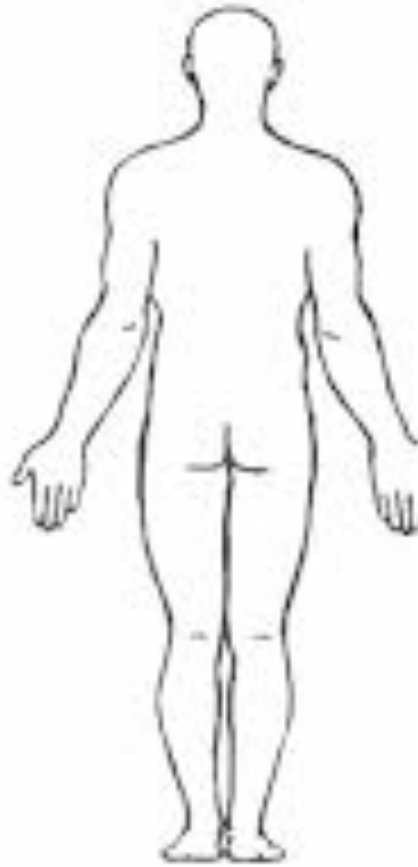
Tissues –

Organs –

Organ System –

Organism –

Anatomical Position:



Key Landmarks (Areas):

Abdominal –

Antecubital –

Axillary –

Brachial –

Buccal –

Cervical –

Femoral –

Inguinal –

Nasal –

Oral –

Orbital –

Patellar –

Pelvic –

Pubic –

Thoracic –

Body Landmarks

■ Anterior

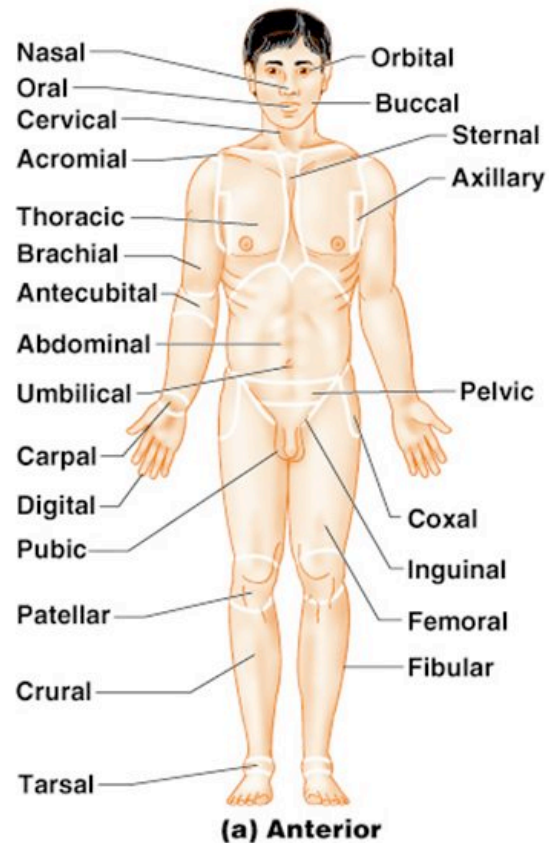


Figure 1.5a

Copyright © 2006 Pearson Education, Inc., publishing as Benjamin Cummings

Key Landmarks Continued:

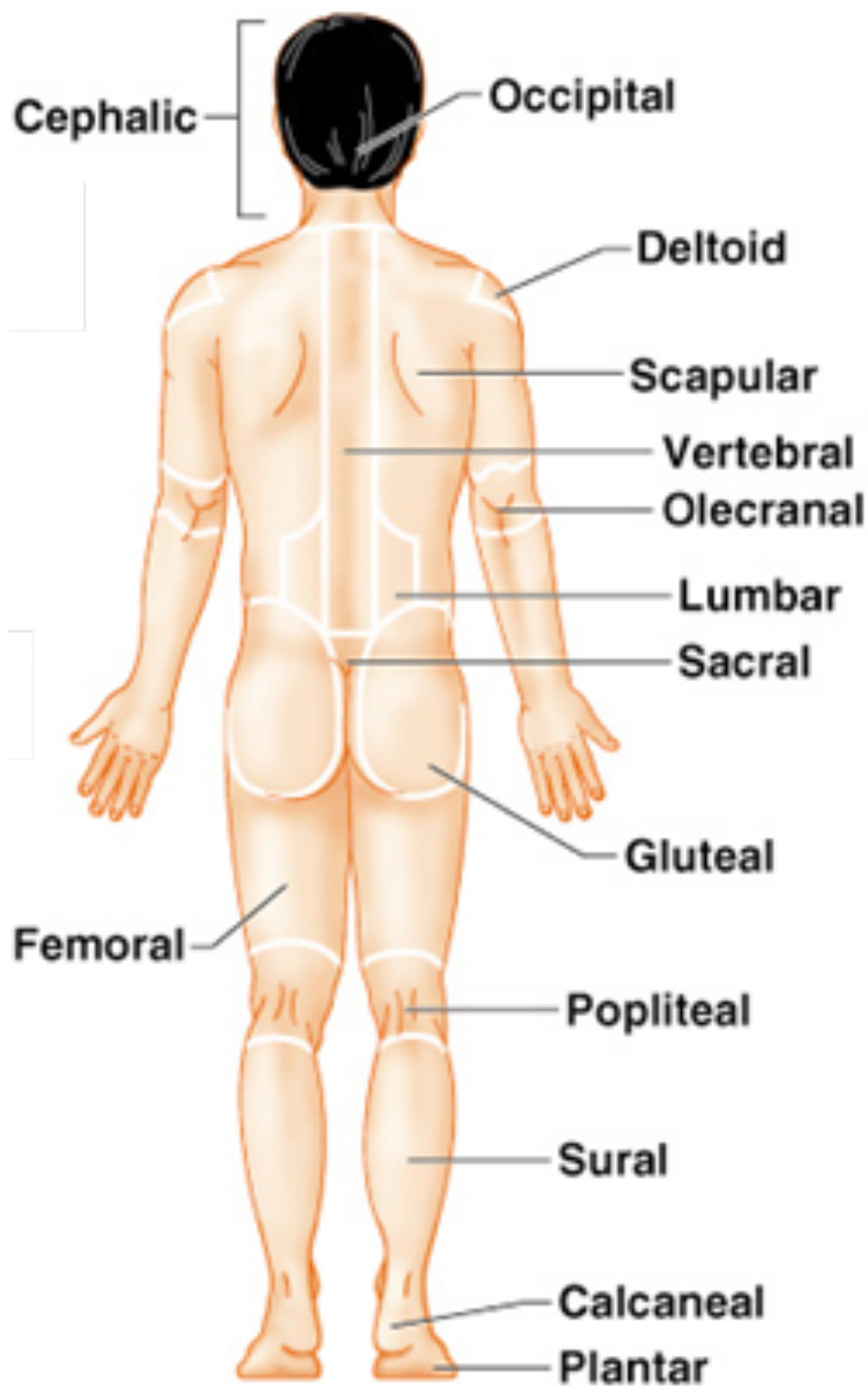
Deltoid –

Gluteal –

Lumbar –

Popliteal –

Scapular –



(b) Posterior

Directional Terms:

Superior –

Inferior –

Anterior –

Posterior –

Medial –

Lateral –

Proximal –

Distal –

Superficial –

Deep –

Body Planes and Sections:

Sagittal –

Coronal –

Transverse –



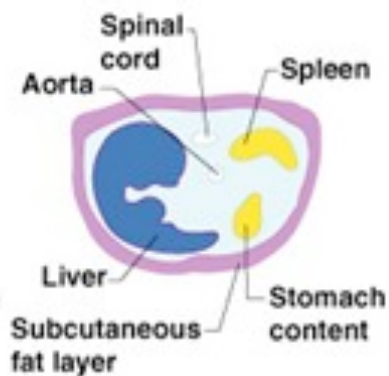
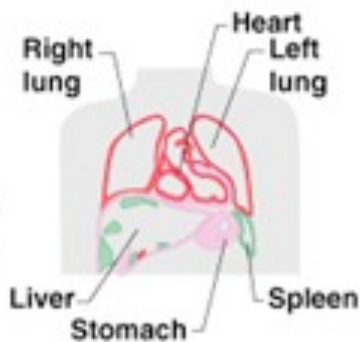
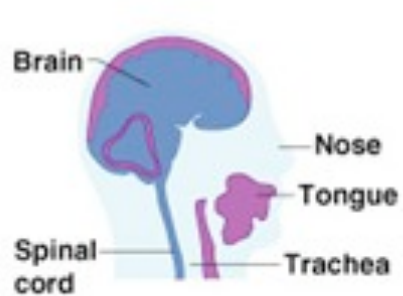
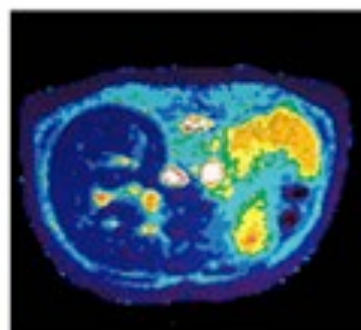
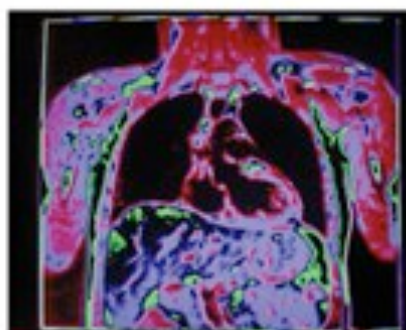
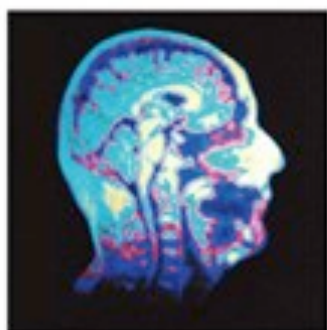
(a) Midsagittal (median)



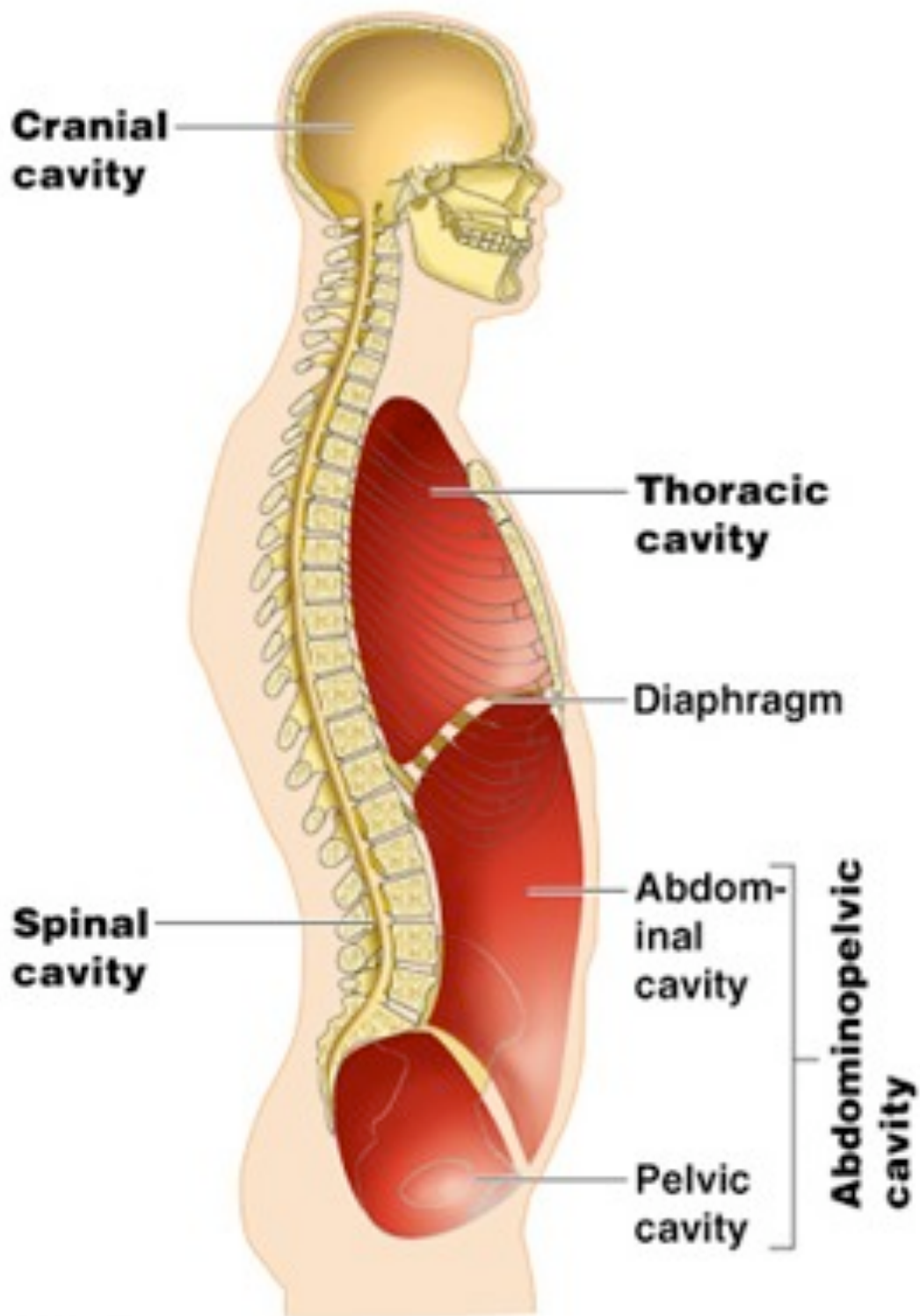
(b) Frontal (coronal) plane



(c) Transverse plane



Body Cavities (spaces):



KEY:

Dorsal body cavity Ventral body cavity